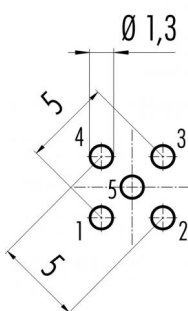


Product description	<b>M12-A male panel mount connector, Contacts: 5, not shielded, dip-solder, IP68, UL, M12x1.0, front mounting</b>
Area	<b>M12-A series 713</b>
Order number	<b>86 1031 1100 0005</b>

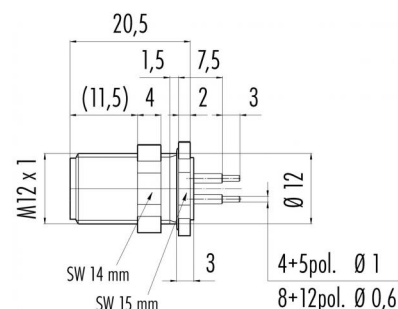
## Illustration



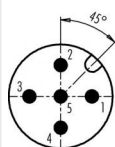
## Conductor layout



## Scale drawing



### Contact arrangement (Plug-in side)



	X	Y
1	2,50	0,00
2	0,00	2,50
3	-2,50	0,00
4	0,00	-2,50
5	0,00	0,00

- 1 braun/brown
- 2 weiß/white
- 3 blau/blue
- 4 schwarz/black
- 5 grau/grey

Geschirmte Versionen: Schirm auf Gehäuse  
Shielded versions: shield on housing

**You can find the assembly instructions on the next page.**

## Technical data

## General values

## Notice

Please note that, due to the change from the old to the new order number, there may be deviations in the technical specifications. For questions about product details, please use the 'Contact Customer Service' form on the right.

male panel mount connector  
screw  
dip-solder  
85 °C  
– 40 °C  
85369010  
20

## Electrical values

Rated current (40 °C)  
Rated voltage  
Rated impulse voltage  
Pollution degree  
Overvoltage category  
Insulating material group  
Insulation resistance  
EMC compliance  
Degree of protection  
Mechanical operation

4 A (3 A UL)  
60 V  
1500 V  
3  
II  
III  
> 10<sup>8</sup> Ω  
not shielded  
IP68  
> 100 Mating cycles

## Cable data

Approval 1

UL



Product description	M12-A male panel mount connector, Contacts: 5, not shielded, dip-solder, IP68, UL, M12x1.0, front mounting
Area	M12-A series 713
Order number	86 1031 1100 00005

Technical data

Material

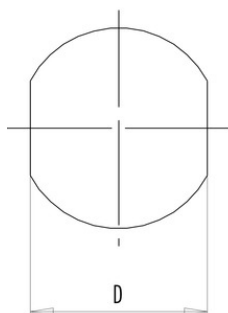
Contact material	CuZn (brass)
Contact plating	Au (gold)
Contact body material	PA
Housing material	Zinc die-cast nickel-plated
REACH SVHC	CAS 80-05-7 (4,4'-isopropylidendiphenol) CAS 7439-92-1 (Lead) CAS 61788-32-7 (Terphenyl, hydrogenated)

Product description **M12-A male panel mount connector, Contacts: 5, not shielded, dip-solder, IP68, UL, M12x1.0, front mounting**

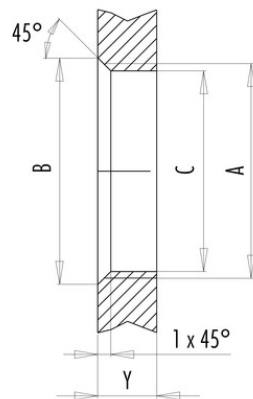
Area **M12-A series 713**  
Order number **86 1031 1100 00005**

## Assembly instructions / Panel cut-out

With flats as anti-rotation device



With bore hole



Installation direction:  
o-ring sits on chamfer.

Thread	Measures			Tightening torque	
	B (mm)	C (mm)	D (mm)	Metal housing/ Positioning sleeve	Plastic housing/ Positioning sleeve
PG 9	16,2	15,3	13,5	1,25 Nm	1,25 Nm
PG 11	20,2	18,7	17,0	2 Nm	–
PG 13,5	21,5	20,5	–	2 Nm	–
M12 x 0,5	–	12,1	–	–	0,4 Nm
M12 x 1	–	12,2	–	1 Nm	–
M14 x 1	15,2	14,2	–	1,25 Nm	–
M16 x 1,5	17,0	16,1	13,5	1,25 Nm	1,25 Nm
M20 x 1,5	21,0	20,1	–	2 Nm	1,25 Nm

Thickness of wall Y (mm)		
Version	min (mm)	max (mm)
Fastened from back side	2	3,5
Front fastened	2	4,5
Positioning possible <sup>1)</sup>	2	3,5
Screw clamp	2	3,5
Thread M12 x 1	2	3,0
Thread M14 x 1 <sup>2)</sup>	<sup>3)</sup> 1,5/ <sup>4)</sup> 2	6,5

### Notes

- <sup>1)</sup> Do not attach a chamfer
- <sup>2)</sup> Wall thickness:  
use locknut 01-5385  
up to 1,5 mm,  
>1,5 mm cut thread
- <sup>3)</sup> Nut
- <sup>4)</sup> Thread in wall of housing

Product description	<b>M12-A male panel mount connector, Contacts: 5, not shielded, dip-solder, IP68, UL, M12x1.0, front mounting</b>
Area	<b>M12-A series 713</b>
Order number	<b>86 1031 1100 00005</b>

## Security notices

The connectors are designed for use in plant, control system and electrical equipment. The end user is responsible for checking whether the connectors are suitable for use in other applications.

Connectors with degree of protection IP 67 and IP 68 are not suitable for use under water. When used outdoors, the connectors must be separately protected against corrosion. For further information about IP degrees of protection refer to 'Technical support' in the Download Centre.